

INFORMATION FOR OVERNIGHT GUESTS

IGLOO-VILLAGE KÜHTAI

Please read this document carefully in order to be properly prepared for the Igloo-Village experience.

Kühtai in the Tyrolean Alps - varied, natural and full of sporting challenges. Only 40 minutes by car from Innsbruck, the igloo village Kühtai is situated at 2'000 m above sea level directly at the foot of the snow-covered slopes. Far away from noise and hustle and bustle, you are in the middle of the skiing area.

Programm

- 5:00 p.m.** Arrive PROMPTLY at the meeting point of the Igloo Village next to hotel Alpenrose, place and time are binding. Welcome and instructions through our igloo guides
- from 6:00 p.m.** you have some time to move into the igloo, afterwards activities in and outside of the igloo with aperitif, dinner (at appr. 7.00 p.m.), snowshoeing, sauna and cozy gathering
- 7:30 a.m.** Good-morning tea is served directly to your igloo
- 8:00 a.m.** All guests walk together to the restaurant of the Hotel Jagdschloss and enjoy a rich breakfast buffet, subsequently individual departure

During your journey

Arrange enough time for the journey in order to arrive at the above mentioned meeting point relaxed and on time. In case of a delay, please contact us immediately via 0800 880 81 88. We ask you to take your mobile phone (with the phone number you indicated during the reservation process) with you so that we can reach you anytime.

Travel by bus

Kühtai is easily and comfortably accessible by bus. Take the local bus from Innsbruck or the free ski bus. From the bus stop Kühtai Jagdschloss, the Igloo-Village Kühtai is accessible within a 3-minute walk. You can look up the timetable here: www.kuehtai.info

Travel by car

The Igloo-Village Kühtai is, in contrary to our other Igloo-Villages, directly accessible by car. There are access roads from the East (via Fernpass, Imst, Ötztal) and from the West (via Innsbruck). Plug in the address Kühtai 24, 6183 Kühtai, Österreich into your satnav in order to reach the parking spaces. In general, the roads are cleared very well, nevertheless, winter tires are absolutely necessary. If it snows during your arrival, snow chains might be compulsory! Please check the circumstances prior to your departure at: <https://www.oeamtc.at/verkehrsservice/>

Changing rooms, preparation / follow-up

You are free to get changed in our shower / toilet facility and get ready for the igloo night or the journey home. Please contact the Igloo-Bar for further information and coordination, we are happy to help.

Please do not to use the premises and parking lots of the Hotel Alpenrose.

This is an adjacent, independent hotel business and does not belong to the Igloo-Village.



Equipment

Normally the temperatures in the Igloo-Village remain constant at around 0°C.

Clothing and equipment:

- Winter-proof, warm clothing (such as for skiing, see picture above)
- Comfortable, warm winter shoes (e.g. snowboard shoes or moonboots)
- Good gloves
- Dry socks, long underwear to change into, also pyjamas
- Two hats (second spare hat in case first hat gets wet)
- Towel, swimwear and flip flops for the whirlpool if required
- A torch or head torch
- Toothbrush & toothpaste
- Cash
- Sunglasses and sun cream
- (Ski-) Goggles (against wind)

A backpack is the ideal item of luggage for the overnight stay in the Igloo-Village.

Please do NOT bring the following:

- An expedition sleeping bag and a sleeping bag liner will be provided for you
- Suitcase (unsuitable)

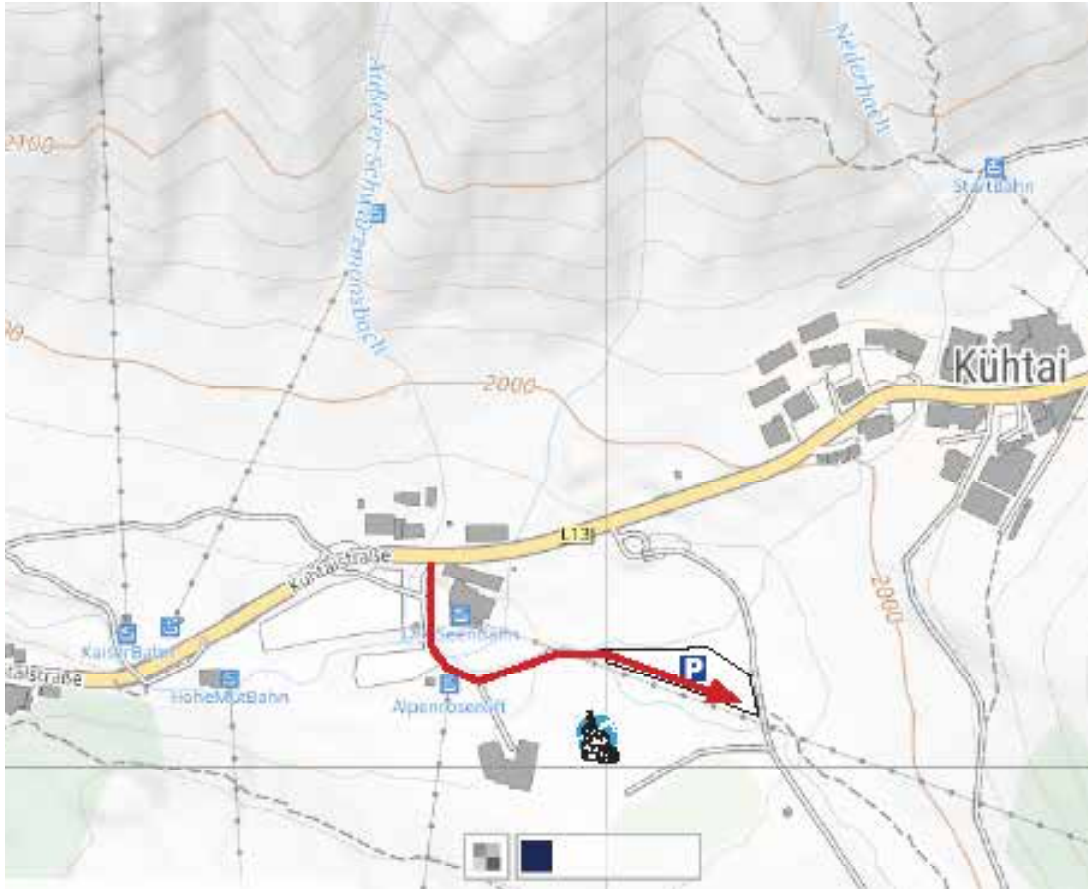
NOT included

- Travel to and from Kühtai (and any parking charges)
- Drinks
- Souvenir (e.g. bath towel)

Journey & Parking

By car

Address «Kühtai 24, 6183 Kühtai, Österreich»



Checklist

- I have got all the equipment I need as listed in the blue box.
- I have read and understood the safety information on page 2.
- I have planned my outward journey adequately (weather check, extra time).
- I have the mobile phone that I specified on reservation with me and am contactable.
- I am adequately insured (cancellation insurance, emergency, foreign country).

Contact, questions & more information

Frequently asked questions can be found on our homepage on [FAQ](#).

Information to the Kühtai region: Tourismus Kühtai. www.kuehtai.info • +43 5239 52 22

Free call from CH: 0800 880 818 • Free call from DE/AT: 0800 880 81 88 • +41 41 612 27 28 • www.iglu-dorf.com • info@iglu-dorf.com

Safety information for overnight stays in the Igloo-Villages

High alpine hazards

Iglu-Dorf GmbH herewith expressly draws the attention of its overnight guests to the environment of the Igloo Village in remote, high alpine nature. Even a short walk can entail high alpine risks. High alpine hazards refer to concrete phenomena such as strong winds, cold, altitude, visibility conditions, snow and ice, sudden changes in the weather, unknown terrain, amongst others.

As the weather cannot be influenced, this can affect the activities during the overnight stay. Activities in the open air (for example visiting the whirlpool) are adapted to the weather situation, i.e. not carried out in the worst case.

Respect nature! Coordinate your activities to your abilities and physical condition and the high alpine environment. Stay overnight only if you are in good health.

Emergency management

A safety concept exists if accidents occur. Rescue transportation may take some time given the exposed location and the weather, and may even be impossible in exceptional circumstances. No rescue transport will be carried out for minor injuries. The client is responsible for any costs for rescues.

In the Igloo Village, there is an emergency chemists with disinfectant, ointment, compresses, materials for dressings, tweezers. We are not allowed to stock or issue any other materials or medicines. The guest is responsible for such items.

Leaving the Igloo Village Zugspitze during avalanche detonations

To avoid natural hazards, it may be the case that you have to leave the Igloo Village Zugspitze during avalanche detonations, even though it is not in a zone at risk of avalanche. The instruction to leave can be issued in the middle of the night. You may have to leave in the middle of the night, perhaps without being able to return to the Igloo Village, with makeshift overnight accommodation in the mountain restaurant.

Concluding remarks

Iglu-Dorf GmbH makes every endeavour to ensure that incidents can be avoided. To this end, we also rely on the cooperation of our overnight guests. Please follow the instructions and advice of the igloo guides.

The need to leave the igloo village on account of avalanche detonations is on average necessary 2-3 nights per season, based on experience from the past three years.

Restrictions to the offer do not justify any price reduction.

We finally wish to point out that after meanwhile more than 40,000 overnight guests, incidents can be counted on one hand. We shall do our utmost to make sure this remains the same. We thank you for your cooperation and look forward to enjoying a pleasant and relaxed atmosphere with you in the Igloo Village.

Thank you for your understanding.

Warm regards,
Iglu-Dorf GmbH