

# INFORMATION FOR DAY GUESTS

## IGLOO-VILLAGE KÜHTAI

Please read this document carefully in order to be properly prepared for the Igloo-Village experience.

The igloo village Kühtai lies 2,000 m above sea level at the foot of deep snow slopes. Far away from the hustle and bustle, you will be located in a ski area with over 80 km of ski slopes.

### During your journey

Arrange enough time for the journey in order to arrive at the above mentioned meeting point relaxed and on time. In case of a delay, please contact us immediately via 0800 880 81 88. We ask you to take your mobile phone (with the phone number you indicated during the reservation process) with you so that we can reach you anytime.

#### Travel by bus

Kühtai is easily and comfortably accessible by bus. Take the local bus from Innsbruck or the free ski bus. From the bus stop Kühtai Jagdschloss, the Igloo-Village Kühtai is accessible within a 3-minute walk. You can look up the timetable here: <https://www.kuehtai.info>

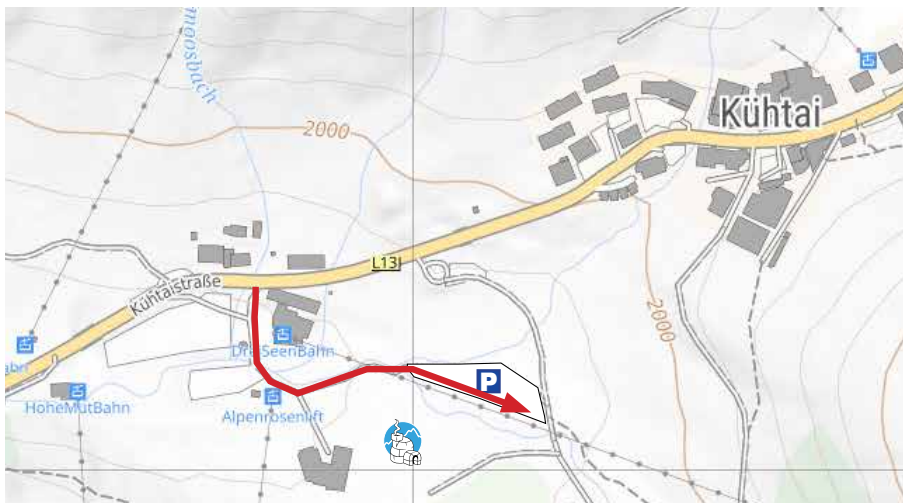
#### Travel by car

The Igloo-Village Kühtai is, in contrary to our other Igloo-Villages, directly accessible by car. There are access roads from the East (via Fernpass, Imst, Ötztal) and from the West (via Innsbruck). Plug in the address Kühtai 24, 6183 Kühtai, Österreich into your satnav in order to reach the parking spaces. In general, the roads are cleared very well, nevertheless, winter tires are absolutely necessary. If it snows during your arrival, snow chains might be compulsory! Please check the circumstances prior to your departure at: <https://www.oeamtc.at/verkehrsservice/>

### Journey & Parking

#### By car

Address «Kühtai 24, 6183 Kühtai, Österreich»



### Equipment

Normally the temperatures in the Igloo-Village remain constant at around 0°C.

#### Clothing and equipment:

- Winter-proof, warm clothing (such as for skiing, see picture above)
- Comfortable, warm winter shoes (e.g. snowboard shoes or moonboots)
- Good gloves
- Cash
- Sunglasses and sun cream

### Nicht inbegriffen

in der Buchung sind:

- An- und Abreise (und ggf. Parkkosten)
- Alle Getränke
- Souvenirs (z.B. Badetücher)

### Contact & Questions

Frequently asked questions can be found on our homepage on [FAQ](#). Information about the region and the location: Tourismus Kühtai [www.kuehtai.info](http://www.kuehtai.info) / +43 5239 52 22

[www.iglu-dorf.com](http://www.iglu-dorf.com)  
[info@iglu-dorf.com](mailto:info@iglu-dorf.com)

+41 41 612 27 28

Free call from CH: 0800 880 818

Free call from DE/AT: 0800 880 81 88

Are you ready?!

